

ANGLO-CHINESE SCHOOL
(JUNIOR)



SEMESTRAL ASSESSMENT 2 (2010)
PRIMARY 3
SCIENCE
BOOKLET A

Monday

1 November 2010

1 hour 30 minutes

Name : _____ ()

Class : P3 _____

INSTRUCTIONS TO PUPILS

DO NOT TURN OVER THE PAGES UNTIL YOU ARE TOLD TO DO SO

Follow all instructions carefully.

There are 20 questions in this booklet.

Answer **ALL** questions.

INFORMATION FOR PUPILS

The total marks for this booklet is 40.

The total time for Booklets A and B is 1 hour 30 minutes.

This question paper consists of 9 printed pages. (Inclusive of cover page)

Section A (40 marks)

For each question from 1 to 20, four options are given. One of them is the correct answer. Choose the correct option (1, 2, 3 or 4) and shade the correct oval on the Optical Answer Sheet (OAS).

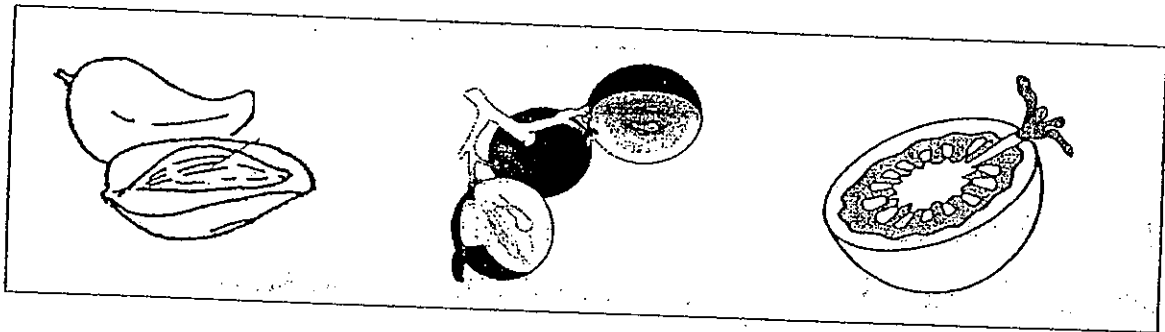
1 The table shows how some things have been classified.

Group A	Group B
Horse	Guppy
Table	Whale
Duck	Ball

Which of the following things should be classified in Group B?

- (1) Bee
- (2) Chair
- (3) Caterpillar
- (4) Earthworm

2 The following things are grouped together based on a common characteristic.



We cannot put hibiscus together with the above group because it is not a _____.

- (1) fruit
- (2) leaf
- (3) stem
- (4) flower

3 The following are statements made by two students.





John : Chicks become roosters.

David : Tadpoles become frogs.

Which one of the following characteristics of living things do the above statements describe?

- (1) Living things can grow.
- (2) Living things can move.
- (3) Living things can respond.
- (4) Living things can reproduce.

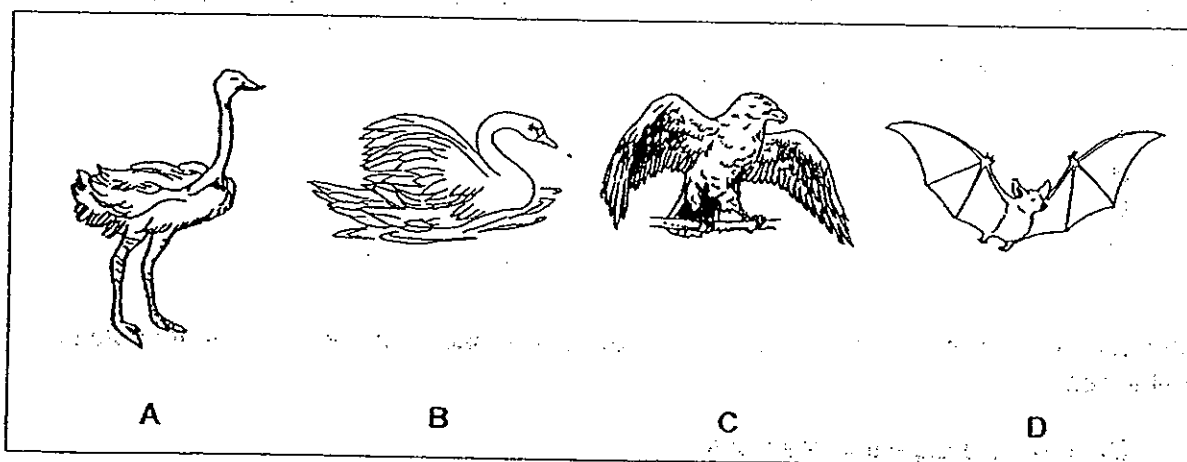
The table below shows how some plants have been classified:

Group A		Group B	
			
Sunflower	Hibiscus	Ixora	Frangipani

Which one of the following are suitable headings for the above groups?

	Group A	Group B
(1)	Live in water	Live on land
(2)	Weak stem	Strong Stem
(3)	Jagged edge leaves	Entire edge leaves
(4)	Flowers grow singly	Flowers grow in a bunch

The diagram below shows four animals grouped together.



Animal D is grouped incorrectly because it _____

- (1) can fly
- (2) has legs
- (3) cannot swim
- (4) does not have feathers

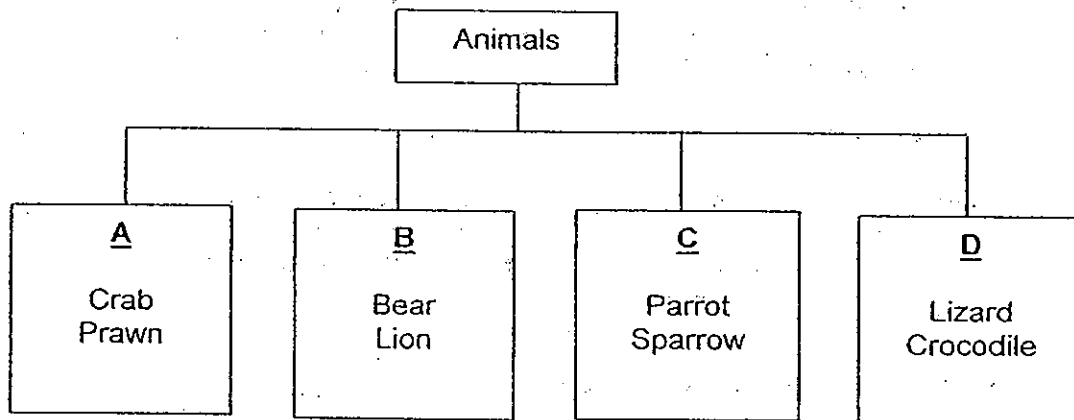
6 Jason made a few observations of an animal over a period of time:

- It swims.
- It has a tail.
- It does not have legs.
- It gives birth to young alive.

Which animal is it likely to be?

- (1) frog
- (2) guppy
- (3) python
- (4) goldfish

7 The animals below are grouped according to their outer covering.



Turtle can be placed in group _____.

- (1) A
- (2) B
- (3) C
- (4) D

8 John noticed that the fruits in his basket started to turn bad after 2 weeks. What could be a possible reason?

- (1) Bacteria are digesting the fruits.
- (2) The fruits have lost their water and nutrients.
- (3) The seeds in the fruits have started to grow into a plant.
- (4) Fungi were breaking down the fruits into simpler substances.

9 Study the pictures below:



Organism F



Organism G

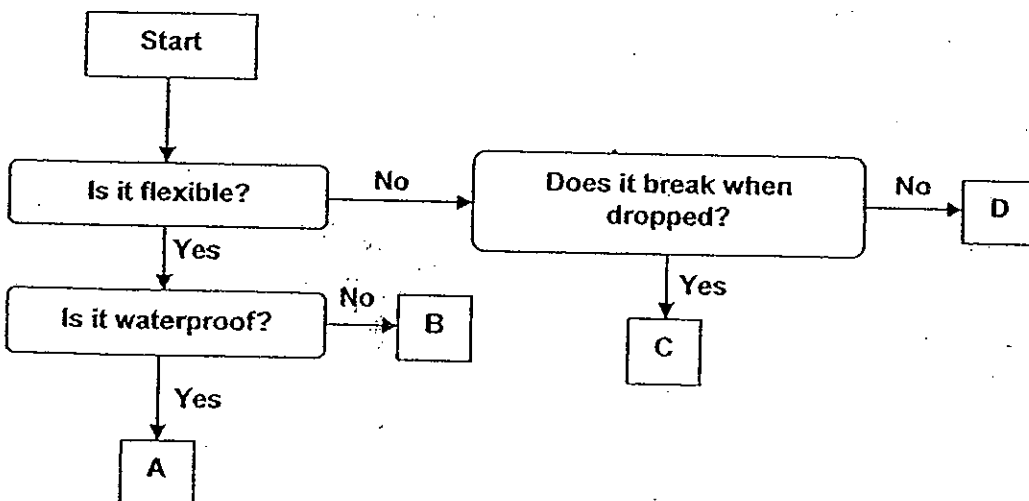
Which one of the following statements is true about organism F and organism G?

- (1) Organism F needs sunlight to make food but G does not.
- (2) Organism G grows from a seed but F grows from spores.
- (3) Organism F reproduces by seeds but G reproduces by spores.
- (4) Organism G grows on soil only but Organism F grows on trees only.

10 Mr Tan added something to enable milk to turn into yoghurt. What could it be?

- (1) fungi
- (2) yeast
- (3) spores
- (4) bacteria

1 Study the flow chart below.



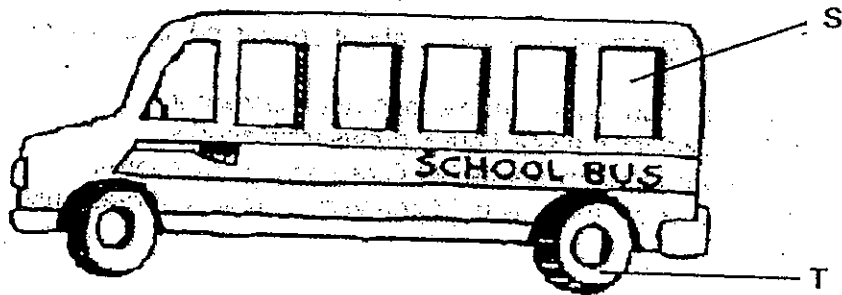
Which one of the following best represents a raincoat?

- (1) A
- (2) B
- (3) C
- (4) D

12 Mark grouped a ball of plasticine and a metal rod together. What characteristic was used to group the objects?

- (1) strength
- (2) flexibility
- (3) hardness
- (4) ability to sink

13 The picture below shows John's school bus which he takes to school.



What materials are parts S and T of John's school bus most likely made of?

	S	T
(1)	Wood	Metal
(2)	Glass	Wood
(3)	Metal	Rubber
(4)	Glass	Rubber

14 Which one of the following items is not a system?

(1)



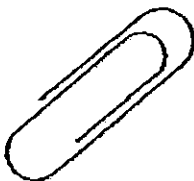
Slippers

(2)



Cat

(3)



Paper clip

(4)

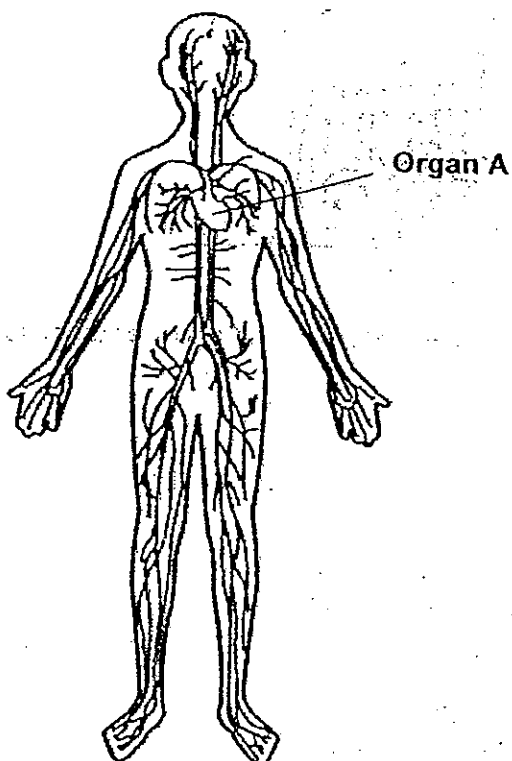


Laptop

15 During a game, Tom was blindfolded and had to choose a box containing some rose petals without touching it. Which sense organ would help him to choose the right box?

- (1) Skin
- (2) Ears
- (3) Eyes
- (4) Nose

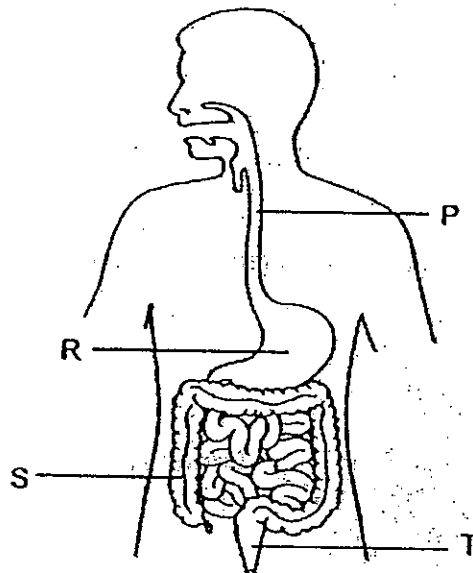
16 The diagram below shows the circulatory system of the human body.



Organ A is the (a) and it is protected by the (b) of the skeletal system.

	(a)	(b)
(1)	heart	skull
(2)	heart	ribcage
(3)	lungs	ribcage
(4)	blood vessel	skin

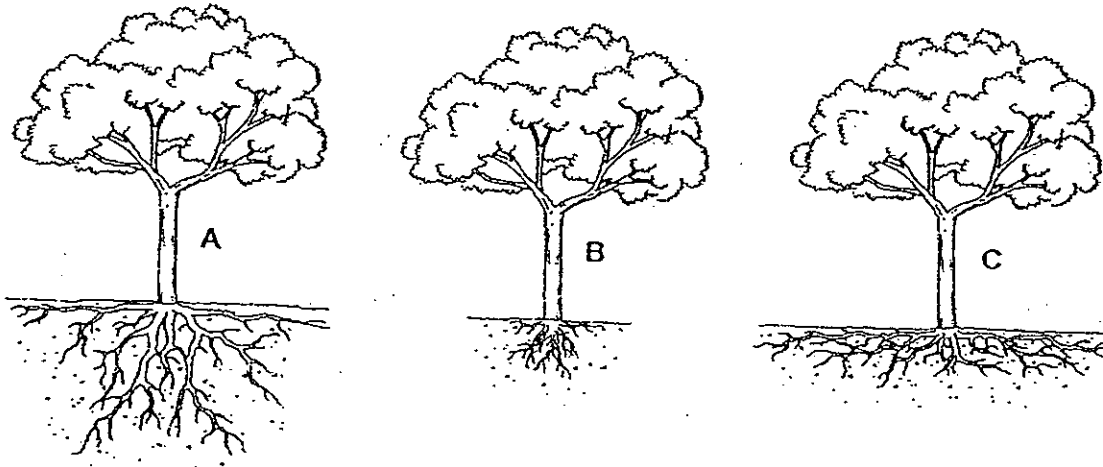
- 17 Jerry used fresh apples to make apple juice.



In which part (P, R, S or T) of the digestive system would a similar process take place?

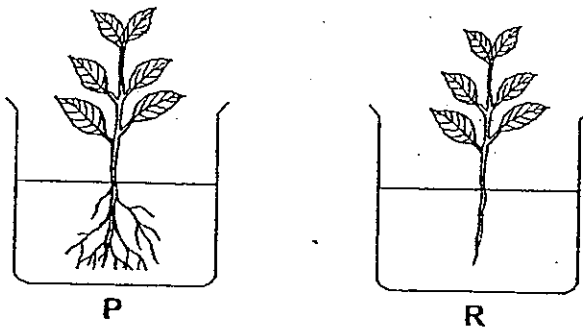
- (1) P
 - (2) R
 - (3) S
 - (4) T
- 18 As we eat, what happens to the food in our mouth?
- A It is mixed with saliva.
 - B It is chewed into smaller pieces.
 - C The water is removed from the food.
- (1) C only
 - (2) A and B only
 - (3) A and C only
 - (4) A, B and C

- 19 The diagrams below show 3 similar trees.



Which of the tree(s) would most likely fall if there is a storm?

- (1) A only
 (2) B only
 (3) A and C only
 (4) B and C only
- 20 In an experiment, 2 balsam plants, P and R, were each put into a jar containing 100 ml of water.



The table below shows the amount of water left in the jar after 3 days.

Plant	P	R
Volume of water left (ml)	90	98

Which one of the following statements below is a correct conclusion of the experiment?

- (1) Plant R absorbed more water than Plant P.
 (2) Plant R absorbed the same amount of water as Plant P.
 (3) Plant P absorbed less water than Plant R as it has roots.
 (4) Plant P absorbed more water than Plant R through its roots.

ANGLO-CHINESE SCHOOL
(JUNIOR)



SEMESTRAL ASSESSMENT 2 (2010)
PRIMARY 3

SCIENCE

BOOKLET B

nday

1 November 2010

1 hour 30 minutes

ne : _____ ()

ss : P3 _____

TRUCTIONS TO PUPILS

NOT TURN OVER THE PAGES UNTIL YOU ARE TOLD TO DO SO

ow all instructions carefully.

ere are 14 questions in this booklet.

ver **ALL** questions.

FORMATION FOR PUPILS

number of marks is given in brackets [] at the end of each question or part question.

total marks for this booklet is 40.

total time for Booklets A and B is 1 hour 30 minutes.

question paper consists of 13 printed pages. (Inclusive of cover page)

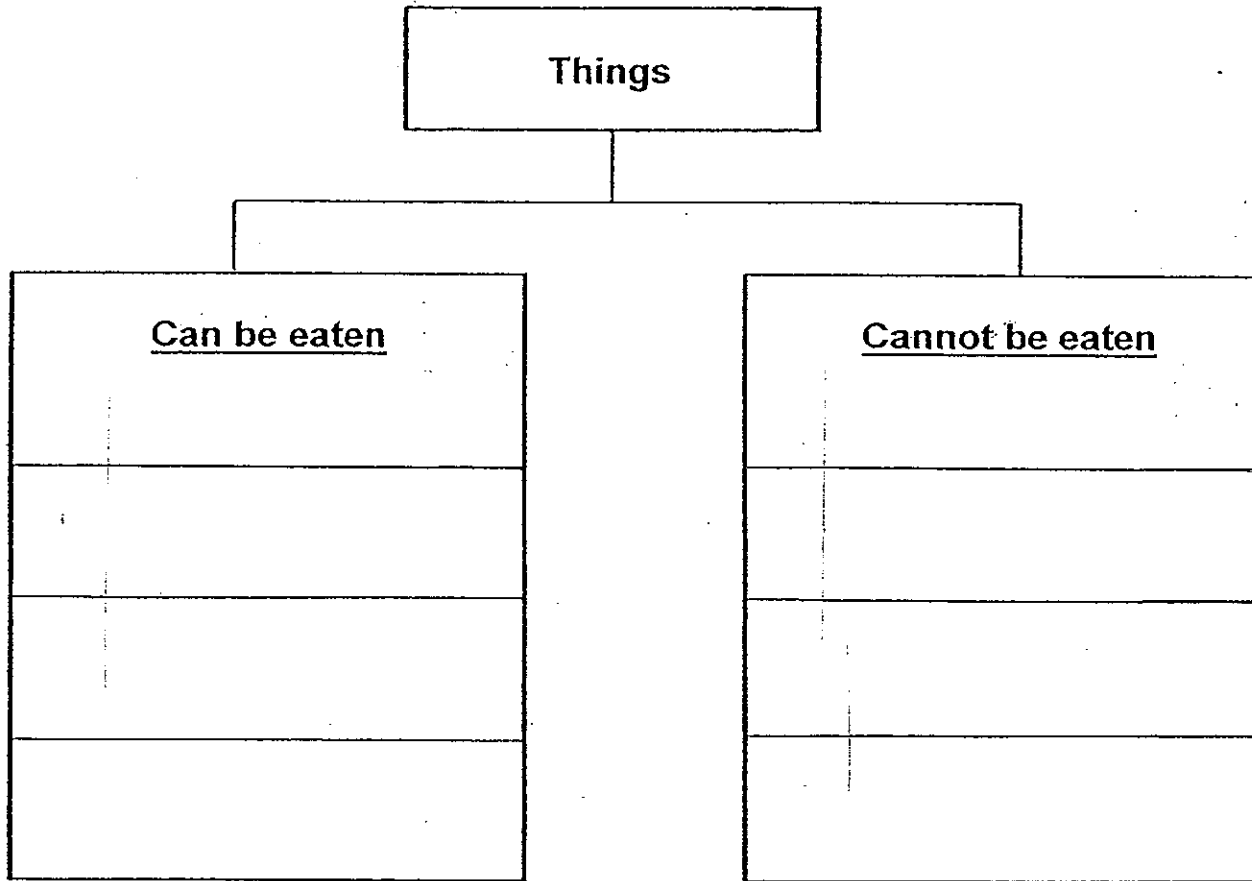
BOOKLET A	/ 40	
BOOKLET B	/ 40	
TOTAL	/ 80	
Parent's signature/ Date:		

Section B (40 marks)

For questions 21 to 34, write your answers in this booklet. The number of marks available is shown in brackets [] at the end of each question or part question.

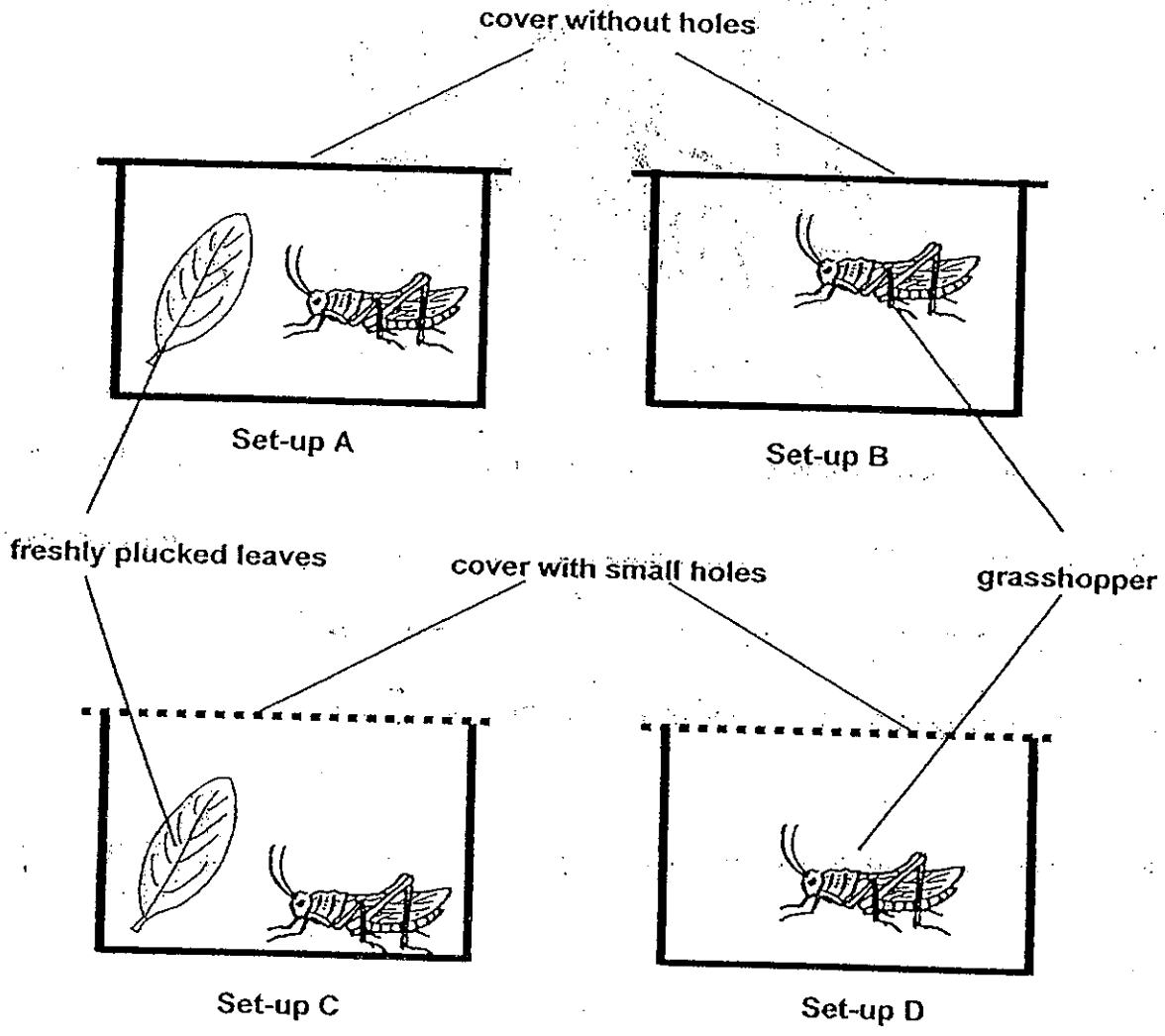
21 Classify the following things that you can find in the supermarket into 2 groups. [2]

Shampoo	Bread	Soap	Milk	Tissue
---------	-------	------	------	--------



--

Norman carried out an experiment on grasshoppers. He set up the experiments as shown below.

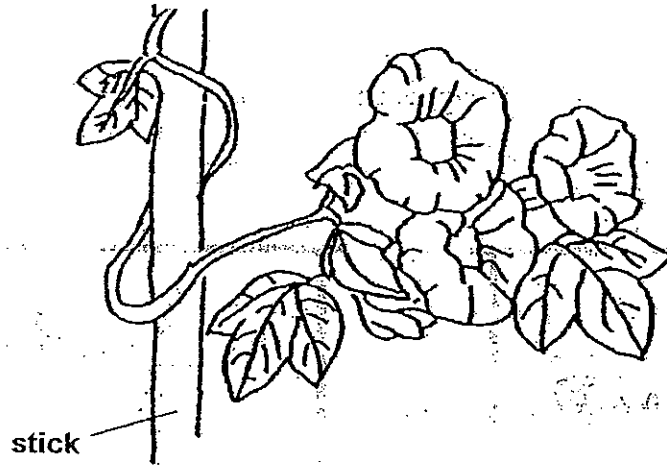


(a) In which set-up would the grasshopper live the longest? [1]

(b) Explain your answer in (a). [1]

23 Study the picture below and fill in the blanks with suitable words.

[3]



The morning glory plant climbs on the stick so that it can grow towards sunlight. The function of the stick is to provide (a) _____ to the plant as it has a (b) _____ stem. The (c) _____ is another plant, which has the same type of stem as the morning glory.

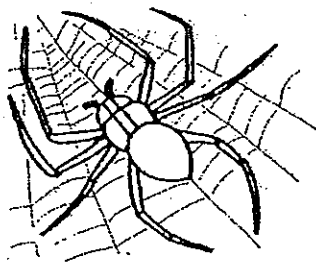
24 Group these animals according to the place they live. Write down your answers in the table provided. [3]

Elephant	Dolphin	Chicken
Penguin	Tortoise	Frog

Land only	Land and Water	Water only

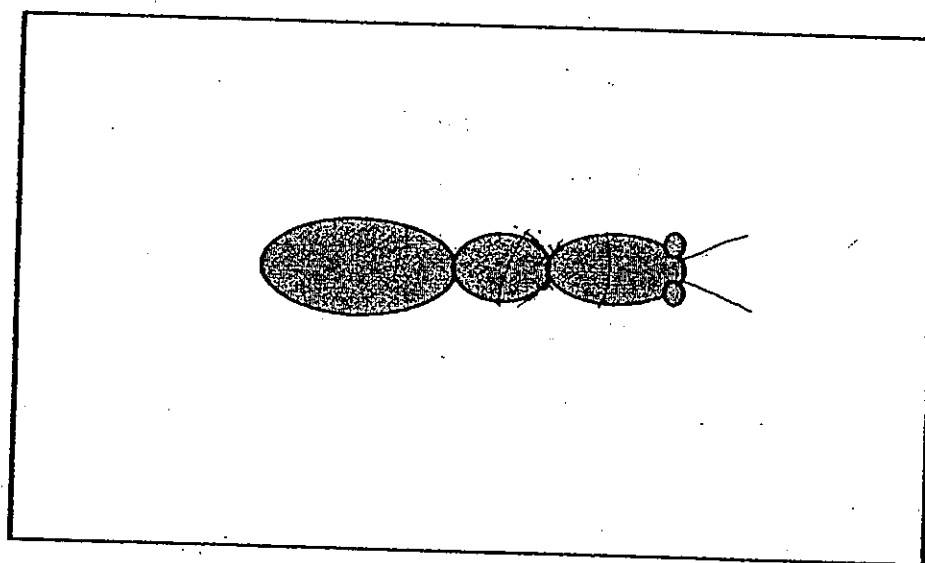
--

25 Matthew observed the animal below.



(a) Matthew said that the animal is an insect. Do you agree? Explain your answer. [1]

(b) Complete the diagram below by drawing in all the physical characteristics of an insect. [1]



(c) How do insects reproduce? [1]

--

26 Study the classification table below.

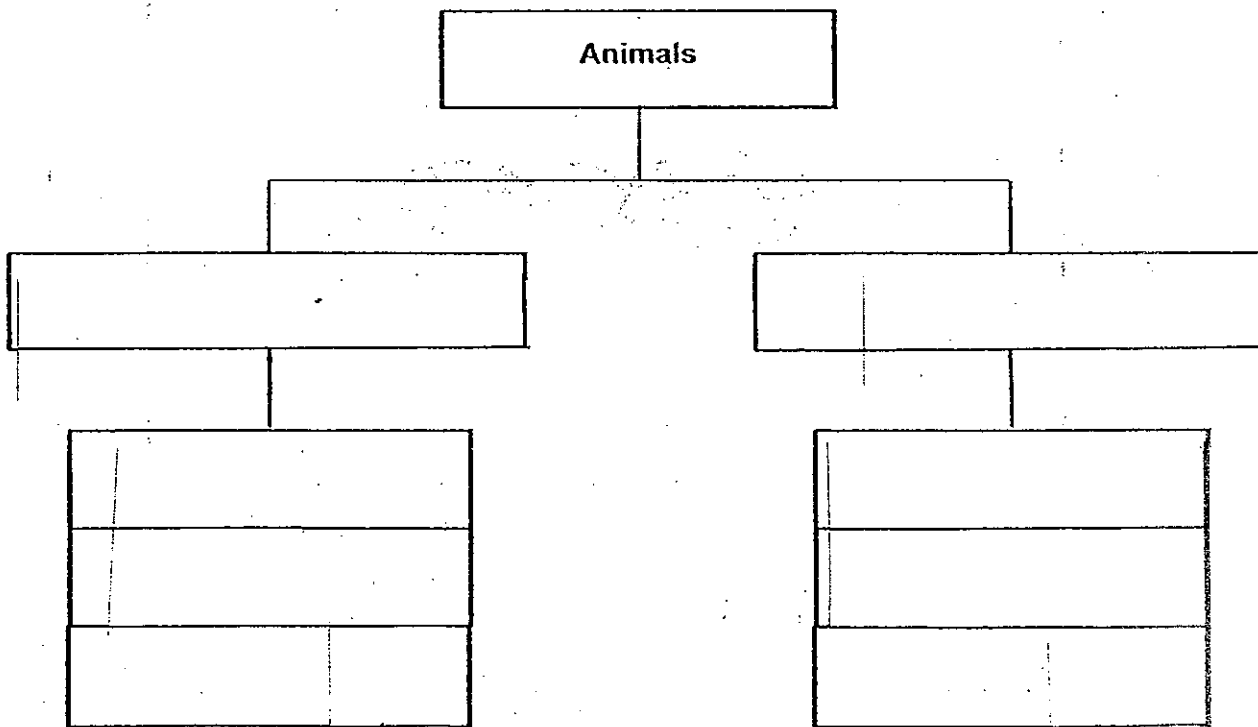
Animals	
X	Y
Spiny Anteater	Parrot
Sheep	Bat
Bear	Swan

(a) Give suitable headings for group X and Y. [1]

X: _____

Y: _____

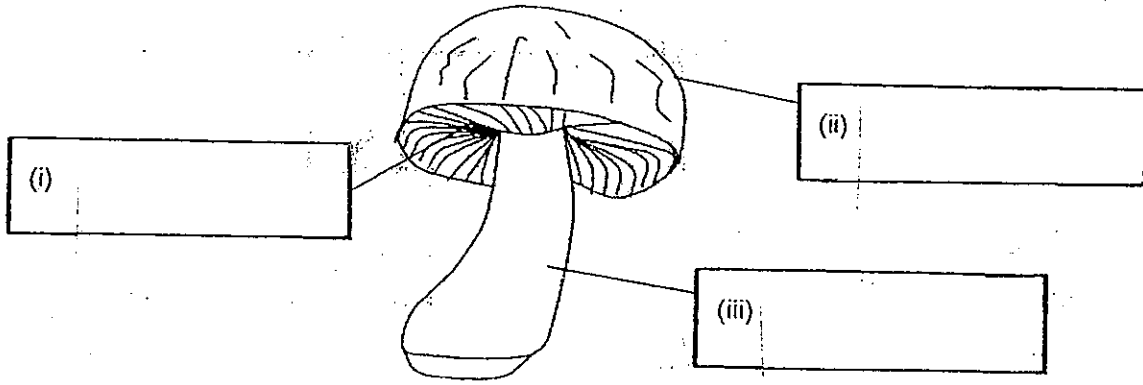
(b) Regroup the animals in X and Y so that there is an equal number of animals in each group. Give suitable headings for each new group. [2]



--

27. (a) Label the parts of the mushroom below.

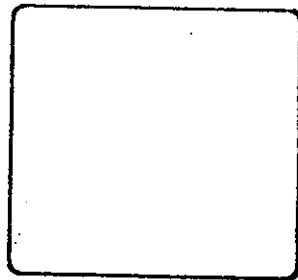
[1½]



(b) Explain the function of part (i).

[1]

(c) Two similar pieces of bread, C and D, are sealed in a bag and left in a warm place for 7 days. The diagrams below show how the 2 slices of bread look like at the end of 7 days.



Bread C



Bread D

Based on your observation, which bread (C or D) was most likely toasted? Explain your answer.

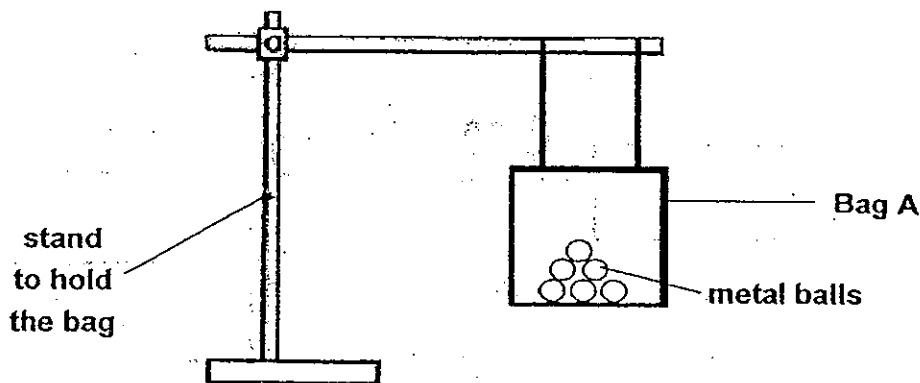
[1]

(d) What type of micro-organism is added to make bread rise before baking?

[½]

--

- 28: Ali set up the experiment below. He added similar metal balls into the bag until the bag broke.



He repeated the experiment using Bag B and Bag C which were made of different materials. He recorded his observation in the table below.

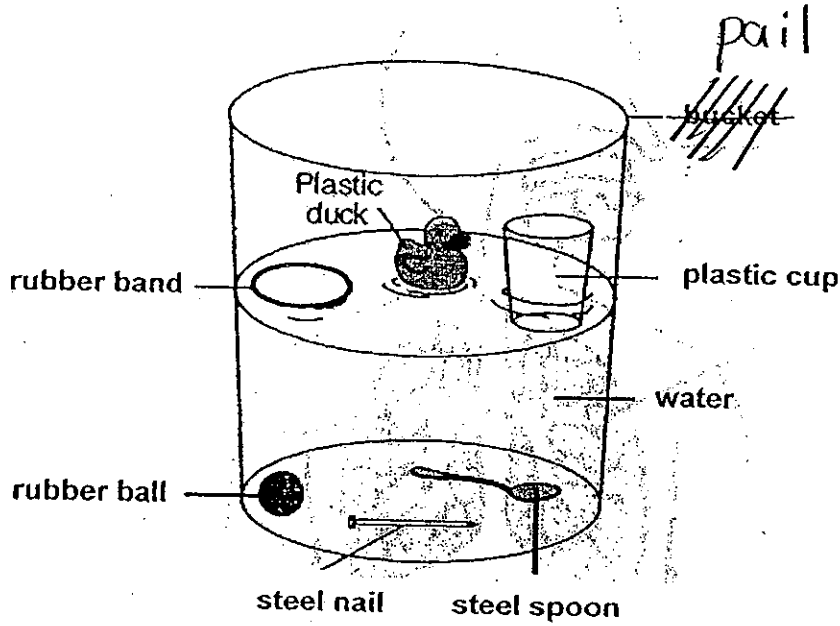
	Number of metal balls added before the bag broke
Bag A	18
Bag B	5
Bag C	30

- (a) If Ali wants to go shopping at the supermarket, which bag would be most suitable for Ali to take along? Explain your choice. [2]

- (b) Ali bought some goldfish from a shop. The shopkeeper chose to put them in a plastic bag instead of a paper bag. Why is the plastic bag a better choice than the paper bag? [1]

29

Ben put six objects made of 3 different materials into a pail of water. The diagram below shows what he observed.



(a) What was he trying to find out?

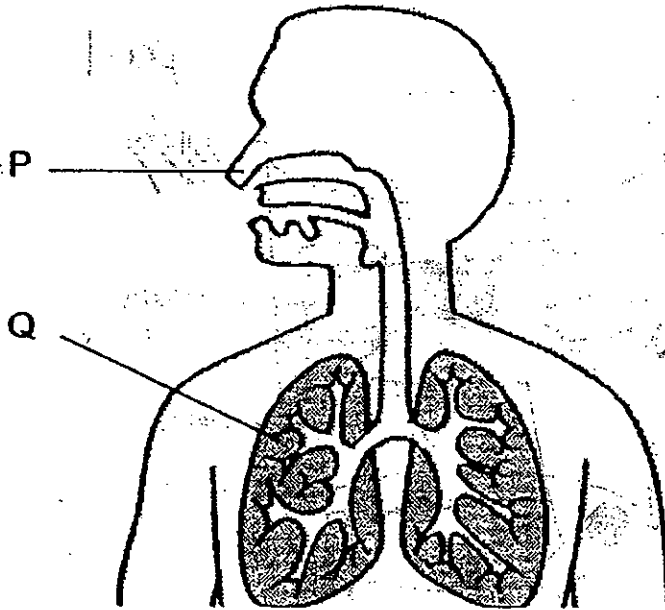
[1]

(b) What would happen if he put a \$1 coin into the pail?

[1]

--

30 The diagram below shows the human respiratory system.



(a) Name parts P and Q of the human respiratory system. [2]

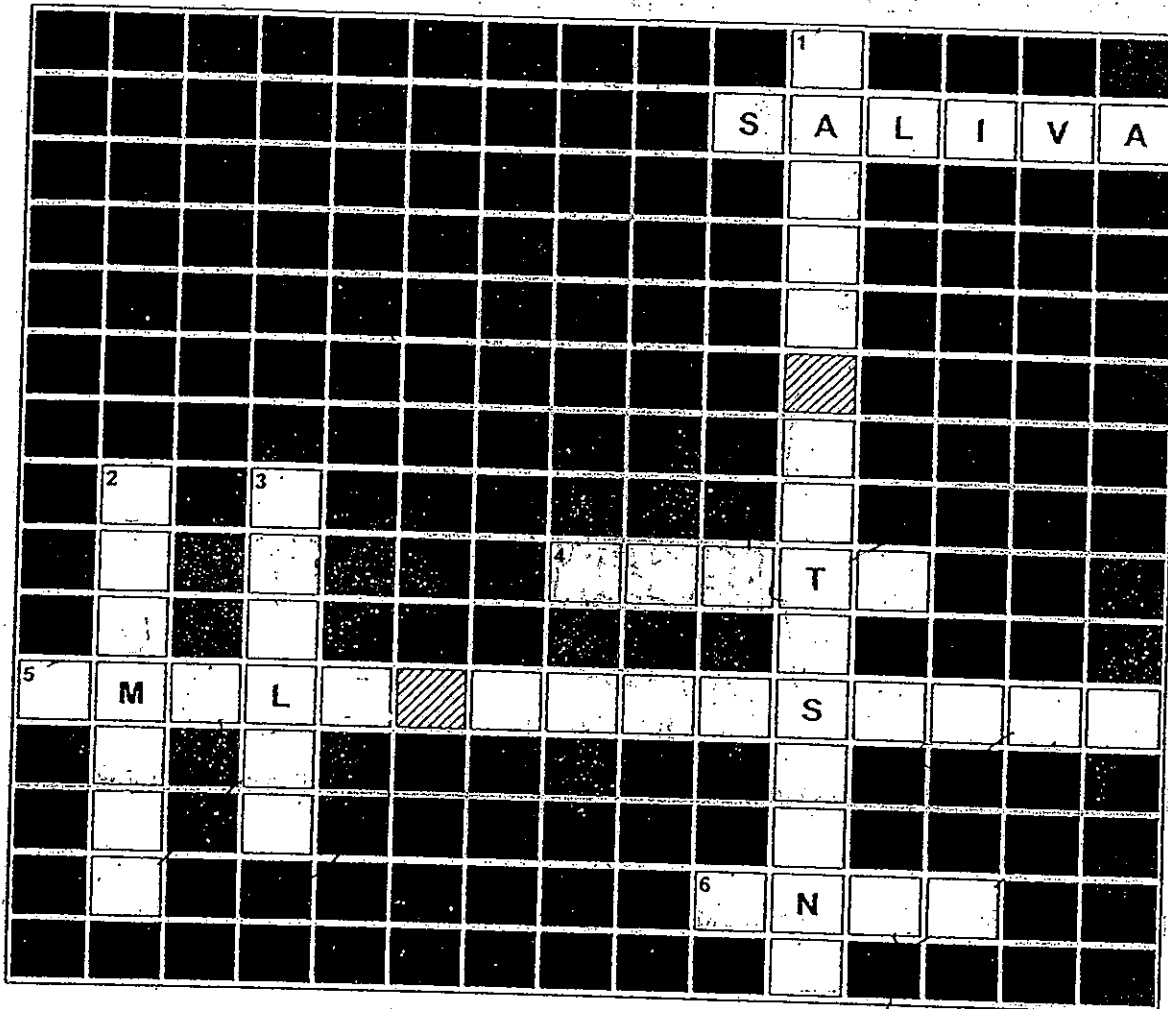
P: _____

Q: _____

(b) State one function of the respiratory system. [1]

31 Complete the crossword puzzle about the digestive system below.

[3]



 space

Example

Across: A watery substance that makes food soft enough to swallow. [SALIVA]

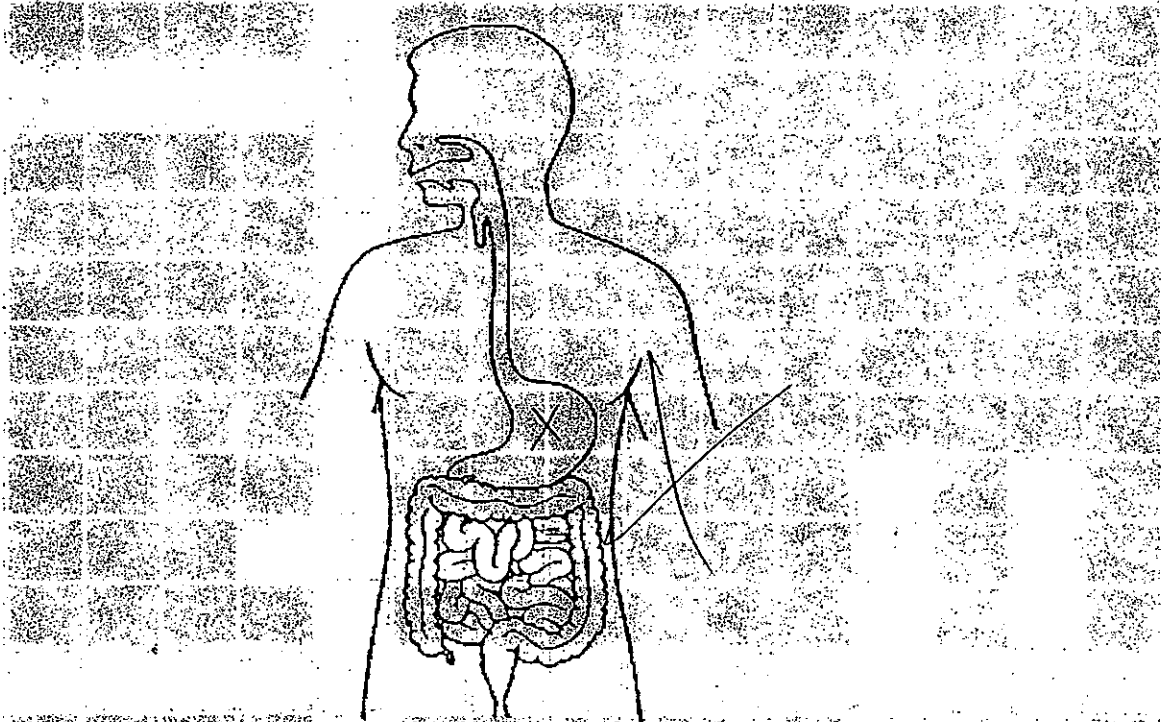
Across

Down

- | | |
|--|--|
| <p>4. This is where grinding and chewing take place to cause food to become smaller pieces.</p> <p>5. This is where digested food is absorbed into the bloodstream.</p> <p>6. Undigested food is passed out through the <u>anus</u>.</p> | <p>1. This is where water is absorbed from the undigested food.</p> <p>2. Food is crushed further and mixed with other digestive juices in the _____.</p> <p>3. Small balls of food are pushed down a tube called the _____.</p> |
|--|--|

--	--

32 The diagram below shows the human digestive system.



(a) Mark with a cross (x) in the diagram above where most of the digestion takes place. [1]

(b) State in which part of the digestive system does digestion start and end. [2]

Starts: _____

Ends: _____

33 Fill in the blanks with suitable words.

(a) The roots take in _____ and _____
that move up the stem to the other parts of the plant. [2]

(b) A green substance found in the leaves called _____, is used to
trap energy from the Sun for plants to make food. [1]

--

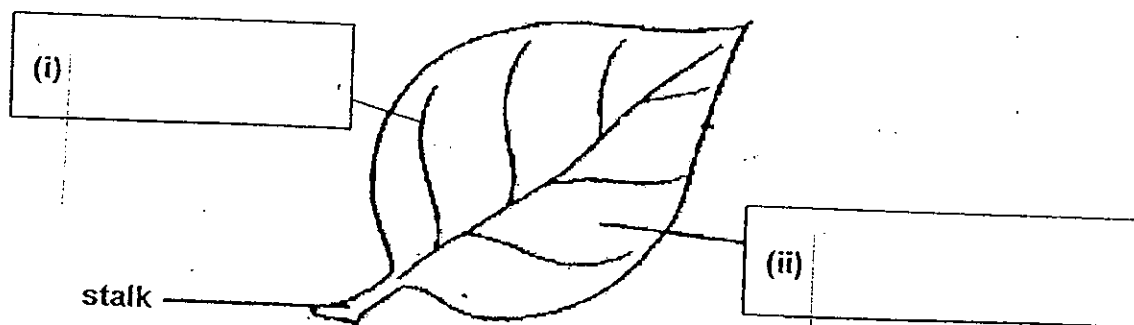
- 34 Siti carried out an experiment on 3 balsam plants (X, Y and Z) in a garden. The table below shows the plant part being removed. For each plant, she only removed one plant part.

Plant	Part being removed	Amount of water given to plant
X	Flowers	500 ml
Y	Leaves	500 ml
Z	Fruits	500 ml

- (a) Which plant would die first? [1]

- (b) Explain your answer in (a). [1]

- (c) Fill in the blanks below with suitable words. [1]

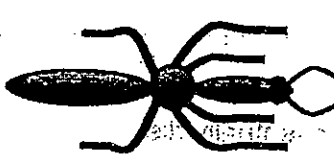


End of Paper

--

Q1	Q2	Q3	Q4	Q5	Q6	Q7	Q8	Q9	Q10
4	1	1	4	4	2	1	4	2	4
Q11	Q12	Q13	Q14	Q15	Q16	Q17	Q18	Q19	Q20
1	4	4	3	4	2	2	2	2	4

Section B (40 marks)

Qn	Suggested Answer			
21	Can be eaten - bread and milk Cannot be eaten - soap, tissue and shampoo			
22(a)	Setup C			
22(b)	The grasshopper has food, air and water.			
23(a)	support			
23(b)	weak			
23(c)	money plant / grape / water melon / pumpkin / long bean / dragon scales fern (any plant with a weak stem)			
24	Land only	Land or Water	Water only	
	Tortoise	Penguin	Dolphin	
	Chicken	Frog		
	Elephant			
25(a)	No, the animal does not have six legs/3 body parts			
25(b)				
25(c)	By laying eggs.			
26(a)	X: Cannot fly Y: Can fly			
26(b)	Lay eggs	Give birth / Do not lay eggs		
	Spiny Anteater	Bat		
	Parrot	Sheep		
	Swan	Bear		

